

## PRESENTATION

Thursday 12 April  
University of Melbourne,  
Lecture Theatre C1  
5:30pm for 6pm start

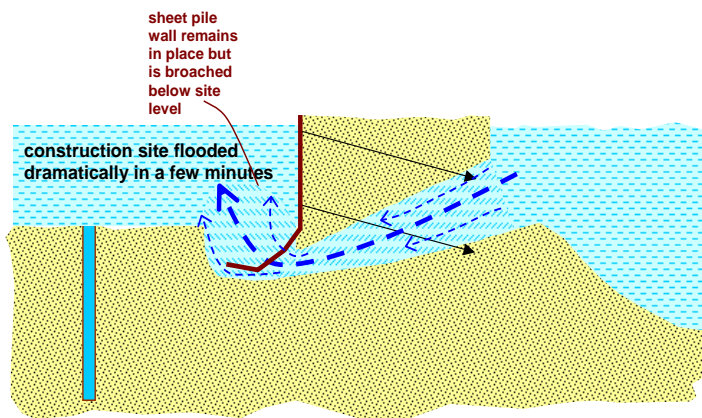
### TWO GEOTECHNICAL MESS-UPS AT THE GOLD COAST - WHAT REALLY HAPPENED?

Occasionally things go wrong in geotechnical engineering, and it's not often that we can talk about them openly. Allan's presentation is about two recent projects that went wrong geotechnically and that were recovered from major set-backs.

#### Sentinel Project - Basement Inundation - Site Recovery

Two days before Christmas 2000, the Nerang River flooded into the two-storey deep basement excavation for the high-rise Sentinel project, undermining part of an adjacent high-rise building. The project development team had safety, timing and \$ problems on their hands.

Site recovery was implemented in an uncertain and hazardous setting. The site was flooded, a section of shoring had collapsed in a dramatic manner, the whole of the remainder of the shoring was weakened, and the edge of the basement was only a few metres from the tidal Nerang River. In fact, for a time the site became tidal.



*What really happened and why? How was it fixed? What can we learn from it?*

#### Gold Coast Convention and Exhibition Centre - Piling Problems

The GCCEC opened in June 2004. It is a beautiful centre, well-suited to its purpose and the Gold Coast environment.

In the very early stages of construction it was discovered that many foundation piles for the project might be grossly under capacity. It took some time to prove this. By the time it was properly proven that at least many piles might fail under working loads, a significant part of the area was built over.

Remediation was stressful, expensive, sometimes confrontational, but was successful, involving a range of strategies and solutions.



*What really happened and why? How was it fixed? What can we learn from it?*

***“Please refer over page for information regarding the lecture time, location and presenter”***

# Thursday 12 April, 2007

- Time:** Commencing at 6:00 pm (refreshments at 5.30pm)
- Where:** University of Melbourne Lecture Theatre C1, Engineering Block C, 4th floor.  
Melways reference map 571 – K10, Bldg 174
- Cost:** Free, refreshments provided
- Registration / RSVP:** Not required

## Allan McConnell

Allan McConnell is a well-known geotechnical engineer, a "general practitioner", with 38 years experience. He has been a leader in one of the biggest geotechnical consulting practices in Australia, and is now an independent specialist consultant, trading as McConnell GeoServices (MGS). Some of his projects include:

- Riverside Centre, Riparian Plaza, Waterfront Place.
- Brisbane Airport, the Domestic and International Terminals, the new Qantas Hangar, etc.
- On the Gold Coast, Soul (77 storeys), Chevron Renaissance (3 tall towers), The Gold Coast Convention and Exhibition Centre (one of his presentations tonight).

Allan has won three ACEA excellence awards for projects, the most recent of them, in 2004, being the site recovery for the Sentinel Project at the Gold Coast (the other of his presentations tonight). In the year 2000 he won the "ACEA Sole Practitioners Award".